

HAVING TROUBLE W/ YOUR SOUND SYSTEM?

CONDITION

No Sound (power LED off)

Charge Indicator LED off
No Sound (power LED on)

Shortened Battery Life

Distorted Sound
Excessive Hum or Noise

POSSIBLE SOLUTION

- turn POWER switch ON
- charge battery or plug in AC cord
- leave plugged in for 48 hours to repair battery
- check for output from source
- make sure all cables are completely plugged in
- turn up volume control of input used
- remove plug from speaker output if not using external speaker output
- charge battery fully; if battery life continues to deteriorate, contact Anchor Audio customer service: (888) 444-6077
- lower system volume control
- use shielded cables
- use balanced microphone

HAVING TROUBLE W/ YOUR WIRELESS SYSTEM? (WIRELESS MODELS ONLY)

CONDITION

No Sound (RX Indicator: ON)

No Sound (RX Indicator: OFF)

POSSIBLE SOLUTION

- set MUTE switch to on (handheld mic only)
- turn up WIRELESS volume control
- make sure mic is plugged into body pack transmitter
- push mic power button
- turn Explorer PRO POWER switch on
- make sure transmitter power switch is on
- set receiver and transmitter to same channel
- replace battery in transmitter

NEED MORE HELP? View demonstration videos on proper system setup and operation at our website - <http://www.anchoraudio.com/explorer.php>

ANCHOR AUDIO CUSTOMER SERVICE

888-444-6077

EXPLORER PRO TECHNICAL SPECIFICATIONS

Rated Power Output	60 watts (AC mode) / 30 watts (DC mode)	Sensitivity For Rated Output	
Max SPL @ rated power	110 dB @ 1 meter	Line	-8.4 dBV (380 mVrms)
General		Mic (unbalanced)	-49 dBV (3.63 mVrms)
Frequency Response	80 Hz - 16 kHz	Mic (balanced)	-49 dBV (3.63 mVrms)
Speaker type	6.5" woven fiber woofer, high-output horn tweeter	Outputs	
Inputs		Line Output (post fader)	Lo-Z, buffered, dual RCA/ 1/4" unbalanced/ balanced
Microphone Inputs	Lo-Z (1 k ohm), balanced, XLR	Speaker Output	2 ohm, unswitched, 1/4"-phone
(two universal jacks)	12 VDC condenser mic (phantom) power	AC Power Requirements	90 - 264 VAC, 50/60 Hz
	Hi-Z (10 k ohm), unbalanced, 1/4"-phone	Dimensions (HWD)	16.5 x 10.5 x 10" / 42 x 27 x 25 cm
Auxiliary (line) input	Hi-Z (10 k ohm), unbalanced, 1/8" stereo, 1/4"-phone	Weight	23 pounds / 10.4 Kg

(Specifications subject to change without notice)



EXPLORER PRO

PORTABLE SOUND SYSTEM

OWNER'S MANUAL



CONTENTS

GETTING STARTED	2
SETTING UP YOUR EXPLORER PRO SOUND SYSTEM	2/3
FEEDBACK / SPEAKER STAND SETUP	3
EXPLORER PRO SOUND SYSTEM BASIC OPERATION.....	4
CARING FOR YOUR BUILT-IN BATTERY / STEREO LINE INPUT JACK.....	4
EXPLORER PRO ACCESSORIES.....	6
OPERATING THE BUILT-IN UHF WIRELESS RECEIVER	6
OPERATING THE WIRELESS MICROPHONE / TRANSMITTER.....	7
HAVING TROUBLE W/ YOUR SOUND SYSTEM?.....	8
EXPLORER PRO SOUND SYSTEM TECHNICAL SPECIFICATIONS	8



Anchor Audio, Inc.

Portable Sound Systems • Torrance, California

A MESSAGE FROM THE OWNER

Thank you for choosing an Anchor Audio portable sound system. Our products incorporate state-of-the-art design and the finest quality of materials and workmanship. We're proud of our products and appreciate the confidence which you have shown by selecting an Anchor system.

I hope you'll take a few minutes to review this manual. We've incorporated several unique features into our products, and your knowledge of how to use them will enhance the performance and your enjoyment of the system.

David Jacobs, President
on behalf of all Anchor Employees

GETTING STARTED

Please check your new unit carefully for any damage which may have occurred during shipment. Each Anchor product is carefully inspected at the factory and packed in specially designed boxes for safe transport.

Notify the freight carrier immediately of any damage to the shipping box or product. Repack the unit in the original box and wait for inspection by the carrier's claim agent. Notify your dealer of the pending freight claim.

NOTE: All damage claims must be made with freight carrier!

RETURNING SYSTEMS FOR SERVICE OR REPAIR

For service or repair, please contact the dealer you purchased your system from or Anchor Audio Customer Service at (888) 444-6077 to obtain a RA (Return Authorization) number. All shipments to Anchor Audio must include an RA number and must be shipped prepaid. C.O.D. shipments will be refused and returned at your expense.

IMPORTANT: Save the shipping box & packing materials, they were specially designed to ship your unit!

WARRANTY REGISTRATION

Visit our website at www.anchoraudio.com and select "Warranty Registration". Complete the online form to activate the six-year limited warranty on your Explorer PRO sound system and two-year limited warranty for the CD player and microphones.

SETTING UP YOUR EXPLORER PRO SOUND SYSTEM

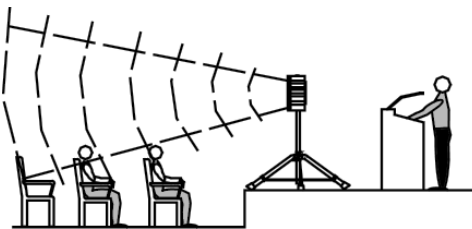
We recommend placing your sound system between the audience and the presenter, facing the audience and raised above their heads using a speaker stand or table. This benefits listeners in the rear of the crowd, minimizes the risk of overpowering those in the front and helps prevent feedback by keeping microphone users behind the sound system.

SINGLE SYSTEM PLACEMENT

Place your unit along the least trafficked aisle pointing towards the center of the audience.

MULTIPLE SYSTEM PLACEMENT

Place units along aisles pointing just off the audience center line, over the crowd's head. With the sound system placed properly it should provide sufficient coverage.

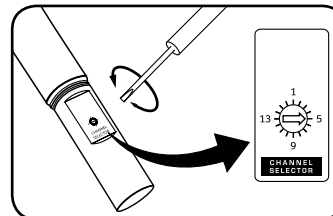


NOTE: The line-output feature can also be used to send the signal to a sound system in a different room or a separate recording device.

OPERATING THE WIRELESS MICROPHONE / TRANSMITTER

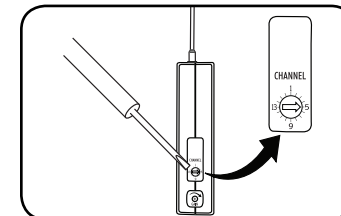
CHANNEL SELECTION - HANDHELD TRANSMITTER

1. Unscrew battery cover on bottom of microphone
2. Set the CHANNEL SELECTOR dial to match the channel setting of your receiver
3. Replace battery cover and tighten firmly



CHANNEL SELECTION - BODY-PACK TRANSMITTER

1. The channel selection dial is located on the side of the transmitter
2. Set the CHANNEL selection dial to match the channel setting of the receiver



NOTE: When using dual wireless, each microphone must be set to a different channel!

USING YOUR WIRELESS MICROPHONES

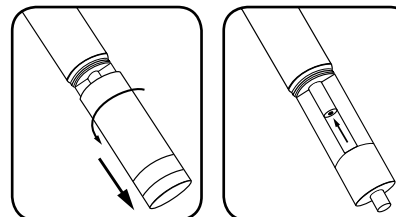
After you have set the transmitter channel (see above) you are ready to use your wireless microphone:

1. Body-pack transmitter users must insert the mic plug into the transmitter jack marked MIC
2. Turn the transmitter power switch to ON
(The red LED will flash when the mic is turned on. If the red LED stays on, the battery is low)
3. Turn the Explorer PRO power switch to ON
4. The RX indicators will light (*only one indicator will light at a time*) when the wireless signal is being transmitted and received

CAUTION: Harmful feedback may occur when walking in front of a sound system or speaker with a wireless microphone. Always point microphone away from speakers!

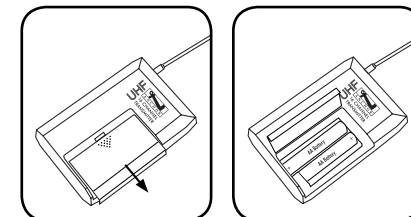
REPLACE BATTERY - HANDHELD TRANSMITTER

1. Unscrew battery cover on bottom of microphone
2. Replace old batteries with 2 fresh size 'AA' alkaline batteries
3. Replace battery cover and tighten firmly



REPLACE BATTERY - BODY-PACK TRANSMITTER

1. Slide open battery cover on front of transmitter
2. Replace old batteries with 2 fresh size 'AA' alkaline batteries
3. Replace battery cover by sliding firmly into place



NOTE: Transmitter power must be OFF when changing batteries!

DIVERSITY WIRELESS BY ANCHOR AUDIO

Anchor Audio UHF wireless is a 16 channel, diversity wireless system that receives signals with two independent antennae. With diversity wireless the receiver processes the stronger signal, effectively minimizing dropouts and interference from other transmitting sources. The antennae are mounted internally so there are no obstructions or risk of damage.

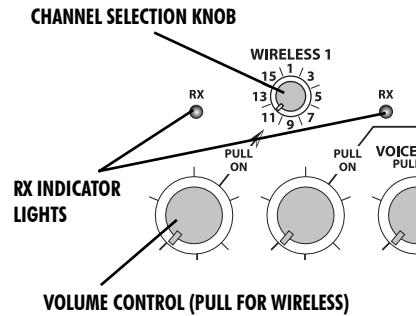
CHANNEL SELECTION - BUILT-IN RECEIVER

Select a channel, set the built-in receiver & microphone transmitter to that channel before using your wireless system.

1. Choose any available wireless channel/frequency from 1 thru 16 (see page 7 for transmitter instructions)
2. Set the Wireless Channel Selector Knob to the channel/frequency you choose in step 1

If you have two wireless receivers repeat above for the second receiver. Remember each receiver/transmitter pair must be set to different channels to avoid interference.

NOTE: Ongoing wireless interference? The frequency you selected may be in use by other systems in the area! Change channels until you find a clear frequency!



FEEDBACK

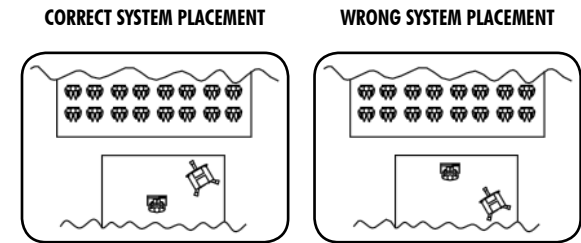
Feedback, a howling noise or shrill sound, is self-generated by the sound system. It's caused by a microphone picking up the sound coming from the speaker and then re-amplifying it. Once a feedback loop starts it continues until the system is adjusted.

FEEDBACK CAUSES

- Microphone too close, pointing towards or in front of speaker
- Volume setting is too loud for room
- Sound reflecting off hard surfaces

AVOIDING & ELIMINATING FEEDBACK

- Point microphone in a different direction
- Keep microphone away from the speaker
- Place speaker in FRONT of the microphone
- Reduce the sound system volume levels



CAUTION: Feedback can damage your equipment & may be hazardous to hearing.

EXPLORER PRO ACCESSORIES

EXP-6001 - Explorer PRO Companion Speaker

Unpowered companion speaker (*speaker cable not included*)

SC-50 - Heavy Duty Speaker Cable

50' speaker cable, connect EXP-6001 to powered Explorer PRO

SS-550 - Heavy Duty Speaker Stand

Adjustable stand made of black, anodized aluminum

NL-EXP - Storage Cover

Durable nylon fitted speaker storage/dust cover

HC-1620 - Hard Case

For travel or storage - holds one Explorer PRO & accessories

EXP-SOFT-TOTE - Soft Rolling Case

Soft case w/ wheels & handle for Explorer, stand & accessories

MIC-90 - Handheld Wired Microphone

Anchor's dynamic, balanced, low impedance microphone w/ unidirectional pick-up pattern, mic "on/off" switch & 20' cable

ANCHOR WIRELESS - 16 CHANNEL UHF

WH-6000 - Handheld Microphone/Transmitter

WB-6000 - Body Pack Transmitter

Works w/ hands free microphones (mic not included)

Body Pack Transmitter Microphones:

CM-60 - Collar Microphone

Lightweight, low-profile mic

EM-60T - UltraLite Microphone

Hands free "Over-the-Ear" mic

LM-60 - Lapel Microphone

Lightweight, clip-on lapel mic

HBM-60 - Headband Microphone

Ultra-lightweight headband mic

CERTIFICATION

This system conforms to part 74 and part 15 of the FCC rules, contact the FCC office for filling forms.

Frequency Range: 682 MHz - 698 MHz

WH-6000EU and WB-6000EU transmitters meet the essential requirements of the European R&TTE Directive 99/5/EC and are eligible to carry the CE marking. CE 0336 ⓘ

European Frequency Range: 863.125 MHz - 864.875 MHz

CONNECTING TWO OR MORE EXPLORER PRO SOUND SYSTEMS

USING A EXPLORER PRO UNPOWERED COMPANION SPEAKER (EXP-6001)

Connect one end of a speaker cable (SC-50) to the SPEAKER OUT jack on the back of a powered Explorer PRO sound system. Connect the other end to the jack labeled IN on the back of a Explorer PRO unpowered companion speaker.

NOTE: AC power is not required for an unpowered companion speaker.

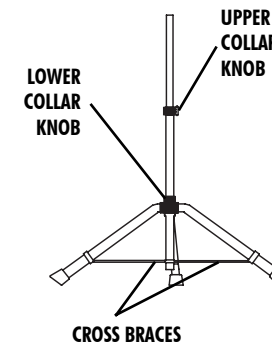
USING 2 POWERED EXPLORER PRO SOUND SYSTEMS

This method uses the line-output feature of your Explorer PRO sound system. Connect a speaker cable (1/4" phone) from the LINE OUT jack on the first powered Explorer PRO to the LINE IN jack on the second powered Explorer PRO. Set the volume of the second Explorer PRO to maximum so that full volume control will be at the first or primary sound system.

NOTE: The line-output feature can also be used to send the signal to a sound system in a different room or a separate recording device.

SPEAKER STAND SETUP

1. Loosen the Lower Collar Knob
2. Separate the stand legs until the leg support Cross Braces are parallel to the floor
3. Tighten the Lower Collar Knob
4. Loosen the Upper Collar Knob and extend the center pole
5. Adjust height and retighten the Upper Collar Knob
6. Place your Anchor sound system on the stand



SPEAKER STAND ADAPTER

The 1.5" dia. Speaker Stand Adapter lets you mount the Explorer on a speaker stand.

1. Slide Speaker Stand Adapter into slot on Explorer PRO bottom
2. Tighten screw to secure adapter
3. Place unit on stand carefully
4. Tighten screw on Adapter collar securing Explorer PRO on stand

BASIC SYSTEM OPERATION

NOTE: Fully Charge Battery Before First DC Use!

1. Set all Input Level Controls to minimum & Tones Controls to flat or the middle setting before turning your system on
2. Plug a wired microphone into the MIC 1 or MIC 2 jacks and/or plug an audio source into the LINE-IN jack
3. Switch POWER to ON, the BATTERY LED will light
4. Slowly increase the Level Control for the input jacks used to the desired volume
5. Adjust BASS & TREBLE controls to desired sound quality

IMPORTANT: Make all connections w/ shielded cables to avoid hum, buzzing or interference.

CARING FOR YOUR BUILT-IN BATTERY

An automatic charging system is built-in to your Explorer PRO Sound System. It is designed to properly charge and maintain the systems built-in battery.

CHARGING THE BATTERY

1. Plug the AC power cord into the Explorer PRO
2. Plug the other end of the cord into AC outlet
3. The Charge Indicator Light will turn green when battery is fully charged

To preserve the life of your battery it is recommended that it be fully charged as soon as possible after every use regardless of the length of operation.

NOTE: System Can Be Used While Battery Charges!

OPERATING IN AC MODE

Plug your sound system into an AC outlet. Operate the system normally while the built-in battery charges automatically. The Charge Indicator Light will glow a solid yellow while charging and turn green when the battery is fully charged.

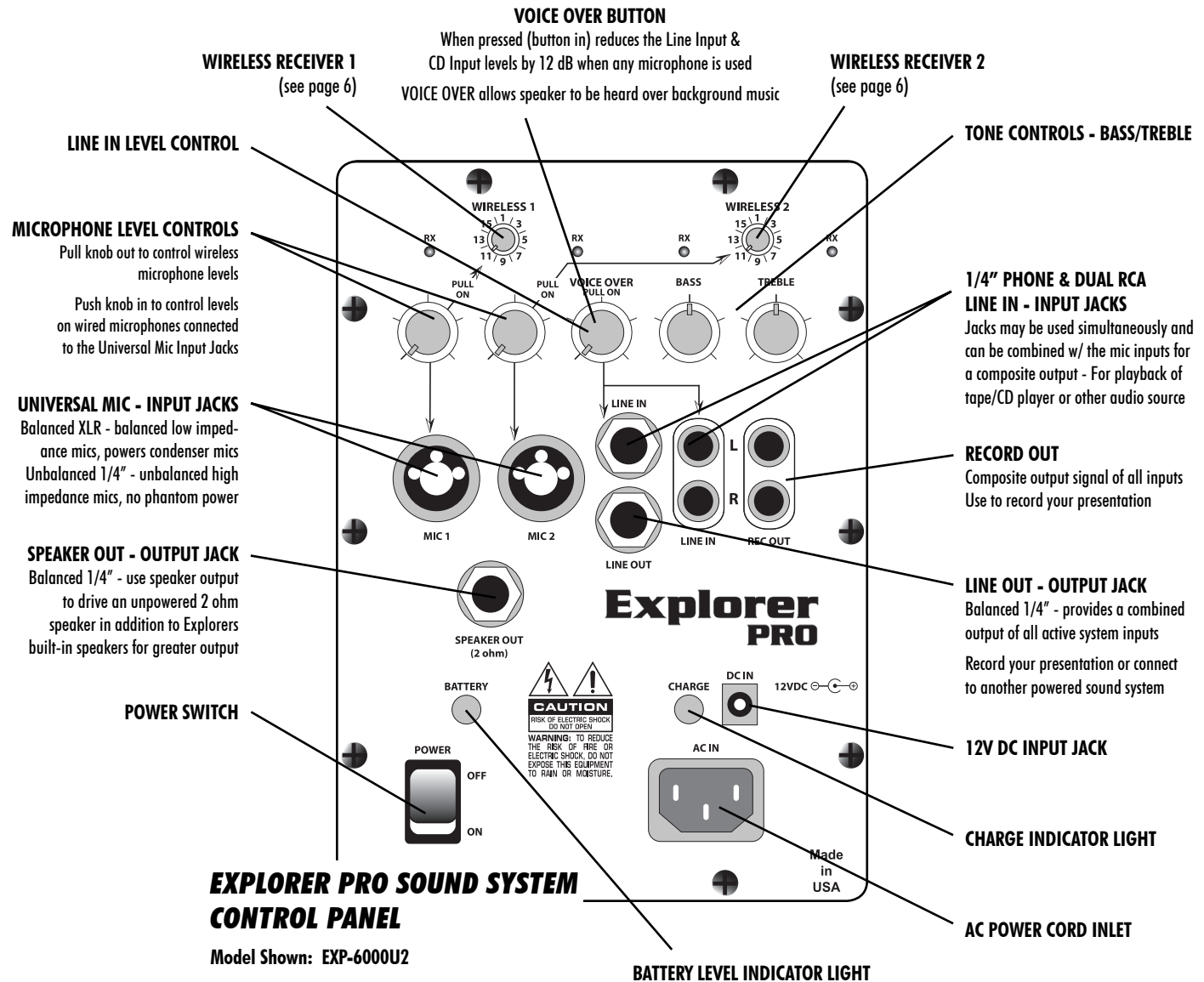
IMPORTANT: Always Store Your System w/ Battery Fully Charged!

STEREO LINE INPUT JACK

A 1/8" (3.5 mm) jack located on the back of the Explorer PRO above the control panel.

This stereo line input is used for playback of a CD/MP3/tape player, laptop computer or similar external audio source.

STEREO LINE INPUT JACK



BATTERY LEVEL INDICATOR LIGHT

The Explorer PRO sound system features a built in Battery Level Indicator Light that shows the battery level in three steps at power on.

- | | |
|--------------------------------------|---|
| 1. GREEN: Battery is fully charged | 3. RED: Battery level becoming low (system auto-shutoff in 15-30 minutes) |
| 2. YELLOW: Battery level is depleted | |

CHARGE INDICATOR LIGHT

The system is equipped with a built in rapid charger, designed to quickly charge and maintain the battery. If the Charge Indicator Light is:

- | | |
|---|--|
| YELLOW (flashing): Battery being tested (about 30 seconds when AC is connected) | GREEN: Battery is fully charged |
| YELLOW (solid): Battery is in good condition, rapid charging has begun | RED: Indicates battery fault, please call the Anchor Audio customer service department: (888) 444-6077 |